



**ETHAN'S  
GLEN**

**\$789,900**

**~~\$892,000~~**

**MLS # 1669337**

**Steve Gray  
Builder**

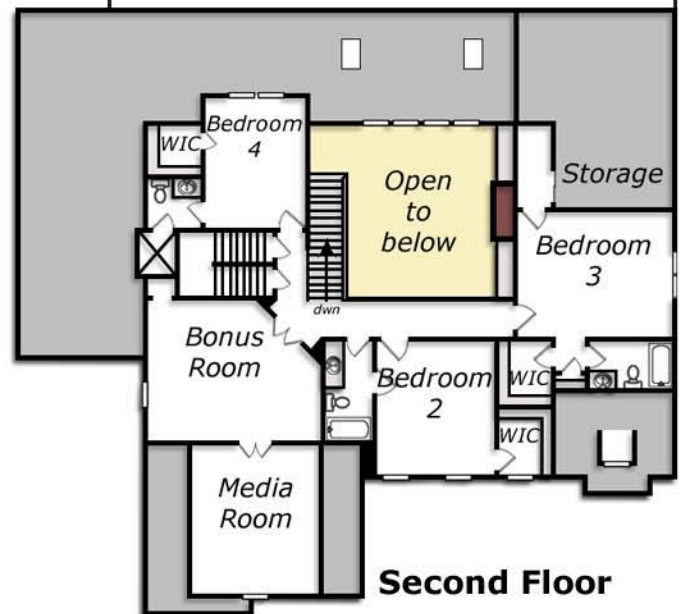
Total living area is  
4,410 sq. ft. per plans  
Lot size 1.22 acres

*Let the Magic Lure You Away ...*

**Reduced  
\$100,000!**



**1085 Tacketts Pond Drive  
Lot #150**



- 4 bedrooms
- 4 full baths, 1 half bath
- Split 3-car garages
- Large bonus room and media room
- Island kitchen
- Hearth room and breakfast room
- First floor laundry room

- Granite counters and tile backsplash in kitchen
- Covered porch, and deck
- 2-story family room
- Walk-up attic access and 2nd floor storage
- Granite and stone fireplace surrounds
- Irrigation system and circular driveway
- Landscape lighting, security system and central vac



Marketed by **STANDOUT PROPERTIES**, for Sales Information contact:  
[www.standoutproperties.com](http://www.standoutproperties.com)

Sales Center  
919.866.1213

Stan Pickett  
919.272.2898

Ann Ward  
919.274.6678

[www.EthansGlenFineHomes.com](http://www.EthansGlenFineHomes.com)

Ethan's Glen is the Triangle's Debut Neighborhood from Contentnea Creek Development Company. Ethan's Glen hosts a Community Pool, Clubhouse, and nature trails. Please verify school assignments with sales staff at Ethan's Glen.

***\*\*All Information deemed reliable but not guaranteed***