



**ETHAN'S
GLEN**

\$599,900

\$649,900

MLS #1608552

**J. David Payne
Builder, Inc.**

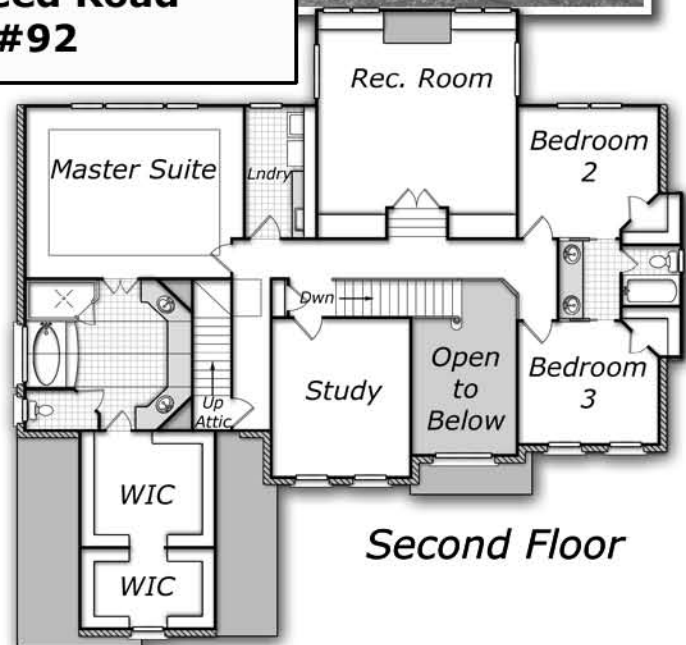
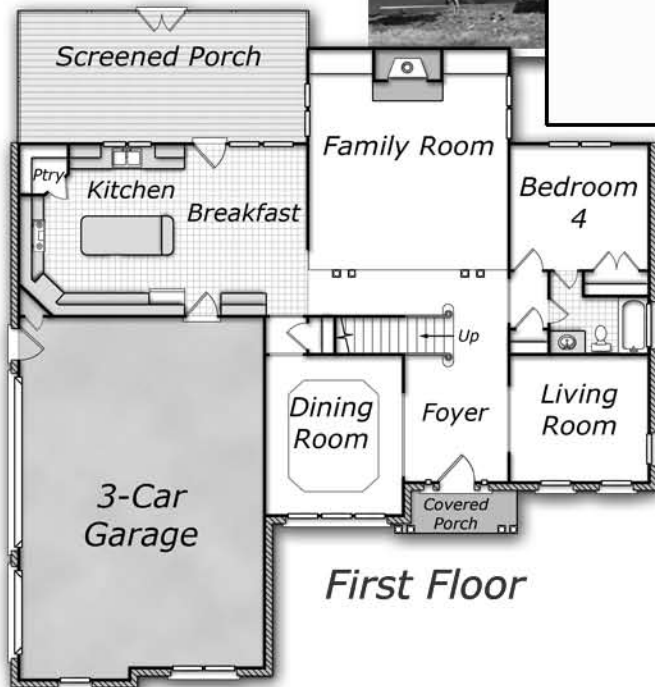
Total living area is
3,761 sq. ft. per plans
Lot size 0.98 acres

Let the Magic Lure You Away ...

**Reduced
\$50,000!**



**12228 Peed Road
Lot #92**



- 4 bedrms includes 1st flr guest suite
- 3 full baths
- Oversized 2nd floor master suite
- 2nd floor bonus/rec room
- Kitchen features:
center island
custom cabinetry
- Granite counters and tile backsplash in kitchen
- Walk-up attic space
- 3-car garage, and screened porch
- Built-in bookshelves surround the fireplace
- Lot backs to wooded permanent buffer
- Irrigation system
- Security system



Marketed by **STANDOUT PROPERTIES**, for Sales Information contact:
www.standoutproperties.com

Sales Center
919.866.1213

Stan Pickett
919.272.2898

Ann Ward
919.274.6678

www.EthansGlenFineHomes.com

Ethan's Glen is the Triangle's Debut Neighborhood from Contentnea Creek Development Company.
Ethan's Glen hosts a Community Pool, Clubhouse, and nature trails.
Please verify school assignments with sales staff at Ethans Glen.

***All Information deemed reliable but not guaranteed*